

Children's Services Act for At-Risk Youth and Families

In 1992, the Comprehensive Services Act for At-Risk Youth and Families was passed by the General Assembly. In 2015, the name was changed to Children's Services Act (CSA). CSA helps families with children who have serious emotional or behavior problems.

Chesapeake Interagency Consortium

In Chesapeake, the CSA is managed by the Chesapeake Interagency Consortium (CIC). The CIC is part of the Department of Human Services. Our goal is to help families stay together, keep children safe and in their community.

Who We Serve

Children must be referred by a core city agency or department. The following children may be served:

*Special Education students requiring private day programming or residential treatment as written in their IEP.

*Special Education students at risk of placement in a private day program or residential treatment center.

*Children in foster care.

*Children at risk of entering foster care or other out of home placement.

Contact Information:

Phone: 757-382-2330

FAX: 757-382-2332

Website:
<https://www.cityofchesapeake.net/>

Address: 100 Outlaw Street,
Chesapeake, VA 23320



Chesapeake Interagency Consortium

Children's Services Act for At-Risk Youth and Families

In 1992, the Comprehensive Services Act for At-Risk Youth and Families was passed by the General Assembly. In 2015, the name was changed to Children's Services Act (CSA). CSA helps families with children who have serious emotional or behavior problems.

Chesapeake Interagency Consortium

In Chesapeake, the CSA is managed by the Chesapeake Interagency Consortium (CIC). The CIC is part of the Department of Human Services. Our goal is to help families stay together, keep children safe and in their community.

Who We Serve

Children must be referred by a core city agency or department. The following children may be served:

*Special Education students requiring private day programming or residential treatment as written in their IEP.

*Special Education students at risk of placement in a private day program or residential treatment center.

*Children in foster care.

*Children at risk of entering foster care or other out of home placement.

Contact Information:

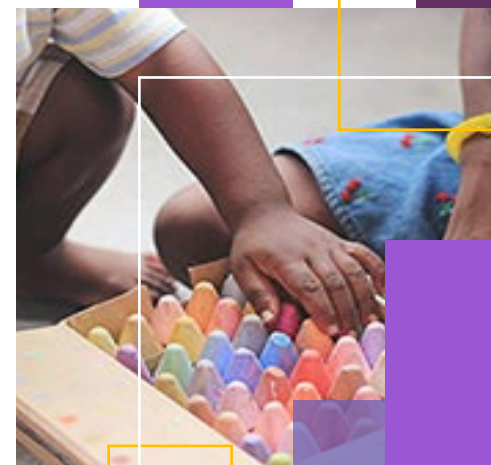
Phone: 757-382-2330

FAX: 757-382-2332

Website:

<https://www.cityofchesapeake.net/>

Address: 100 Outlaw Street,
Chesapeake, VA 23320



Chesapeake Interagency Consortium

Children's Services Act for At-Risk Youth and Families

In 1992, the Comprehensive Services Act for At-Risk Youth and Families was passed by the General Assembly. In 2015, the name was changed to Children's Services Act (CSA). CSA helps families with children who have serious emotional or behavior problems.

Chesapeake Interagency Consortium

In Chesapeake, the CSA is managed by the Chesapeake Interagency Consortium (CIC). The CIC is part of the Department of Human Services. Our goal is to help families stay together, keep children safe and in their community.

Who We Serve

Children must be referred by a core city agency or department. The following children may be served:

*Special Education students requiring private day programming or residential treatment as written in their IEP.

*Special Education students at risk of placement in a private day program or residential treatment center.

*Children in foster care.

*Children at risk of entering foster care or other out of home placement.

Contact Information:

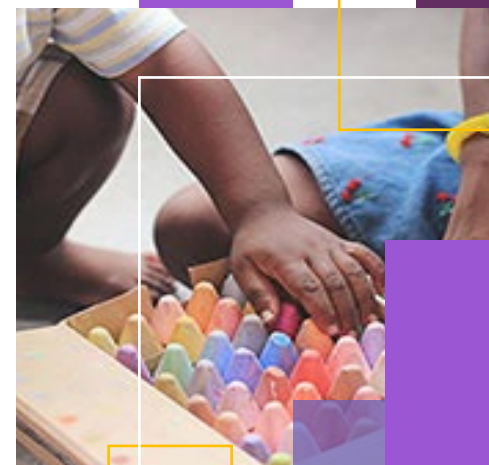
Phone: 757-382-2330

FAX: 757-382-2332

Website:

<https://www.cityofchesapeake.net/>

Address: 100 Outlaw Street,
Chesapeake, VA 23320



Chesapeake Interagency Consortium



Parents

Every family has unique strengths as well as challenges. When a child's behavior becomes difficult at home, at school or in the community it can be overwhelming for parents. The job of FAPT is to help parents help their children. We provide parents the tools they need to understand their child's needs and manage their behaviors by providing information and support so parents don't feel powerless or alone.

Team Approach

The Family Assessment & Planning Team (FAPT) is a group of professionals and parents that work together to help at risk children. Parents are equal partners in the FAPT process. Members include the following core agencies and departments:

- *Chesapeake Public Schools
- *Chesapeake Integrated Behavioral Health
- *Chesapeake Court Service Unit
- *Chesapeake Health Department, and
- *Chesapeake Social Services



Empowering Communities to Serve Youth

Values

- *Support a system of care
- *Child centered and family focused
- *Provide a continuum of care
- *Integrate services across agencies
- *Foster collaboration
- *Fiscal accountability



Parents

Every family has unique strengths as well as challenges. When a child's behavior becomes difficult at home, at school or in the community it can be overwhelming for parents. The job of FAPT is to help parents help their children. We provide parents the tools they need to understand their child's needs and manage their behaviors by providing information and support so parents don't feel powerless or alone.

Team Approach

The Family Assessment & Planning Team (FAPT) is a group of professionals and parents that work together to help at risk children. Parents are equal partners in the FAPT process. Members include the following core agencies and departments:

- *Chesapeake Public Schools
- *Chesapeake Integrated Behavioral Health
- *Chesapeake Court Service Unit
- *Chesapeake Health Department, and
- *Chesapeake Social Services



Empowering Communities to Serve Youth

Values

- *Support a system of care
- *Child centered and family focused
- *Provide a continuum of care
- *Integrate services across agencies
- *Foster collaboration
- *Fiscal accountability



Parents

Every family has unique strengths as well as challenges. When a child's behavior becomes difficult at home, at school or in the community it can be overwhelming for parents. The job of FAPT is to help parents help their children. We provide parents the tools they need to understand their child's needs and manage their behaviors by providing information and support so parents don't feel powerless or alone.

Team Approach

The Family Assessment & Planning Team (FAPT) is a group of professionals and parents that work together to help at risk children. Parents are equal partners in the FAPT process. Members include the following core agencies and departments:

- *Chesapeake Public Schools
- *Chesapeake Integrated Behavioral Health
- *Chesapeake Court Service Unit
- *Chesapeake Health Department, and
- *Chesapeake Social Services



Empowering Communities to Serve Youth

Values

- *Support a system of care
- *Child centered and family focused
- *Provide a continuum of care
- *Integrate services across agencies
- *Foster collaboration
- *Fiscal accountability